

How to Install the Management Program

The procedure for installing the management program depends on the operating system installed on your PC. The following section takes Windows XP as an example.

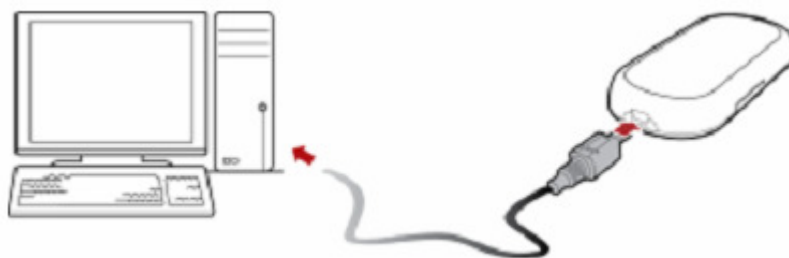
1. Insert the CD to the computer..
2. The OS (Operating System) automatically detects and the installation wizard.

Note: If the auto-run wizard does not respond, find the installing file in the driver path and run the program manually.

3. Follow the prompts.
4. Once the program is installed successfully, the shortcut icon of the program is displayed on the desktop.
5. Every time the device is connected to the PC with the compatible data cable, the program is launched automatically.

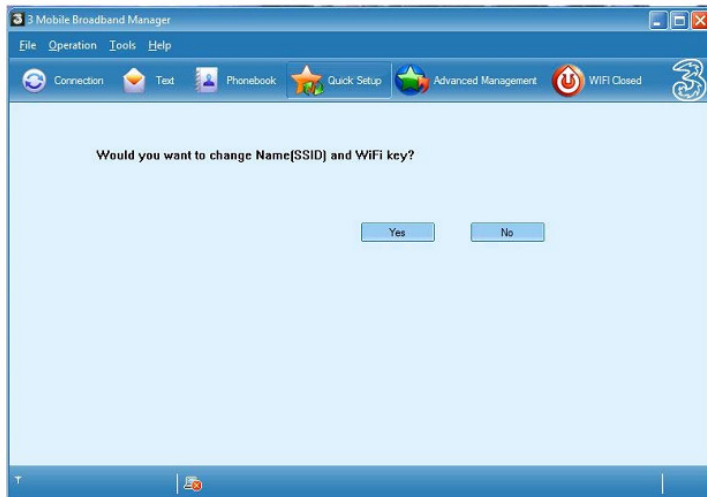
Note: You can also double-click the shortcut icon on the desktop to launch the program.

Setting up your Wireless Modem using a PC



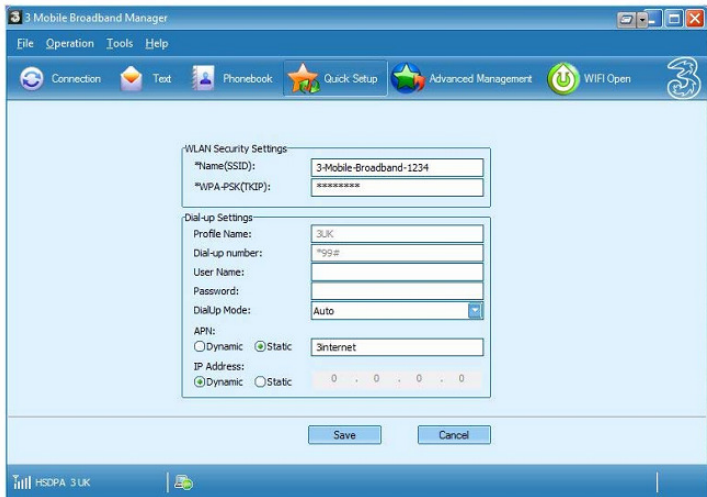
Insert your SIM card into the Wireless Modem, and connect it to your Windows PC using the supplied USB cable. Make sure the device is powered off when you do this, and then launch the Broadband Manager Program on the PC. (Navigate to All Programs > 3 Mobile Broadband Manager and then click on the '3 Mobile Broadband Manager' program)

The Connection Manager starts (3 Mobile Broadband Manager), and prompts you to change your network Name (SSID) and Wifi Key (the security key of your network). Though you don't need to, it's recommended that you do for security reasons. Click on 'Yes' if so. (If you don't want to change these details, click on No, and go to next step)

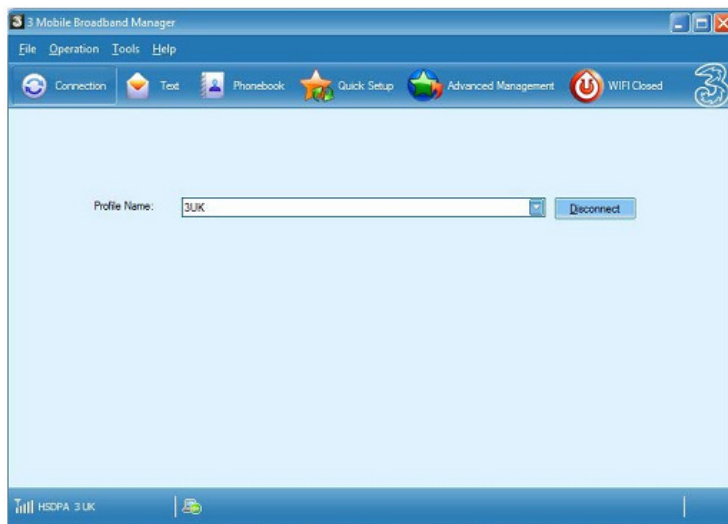
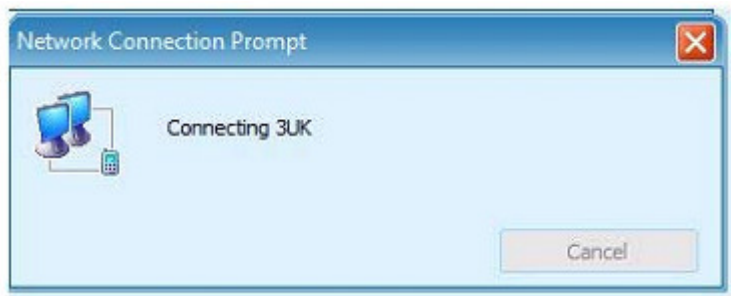
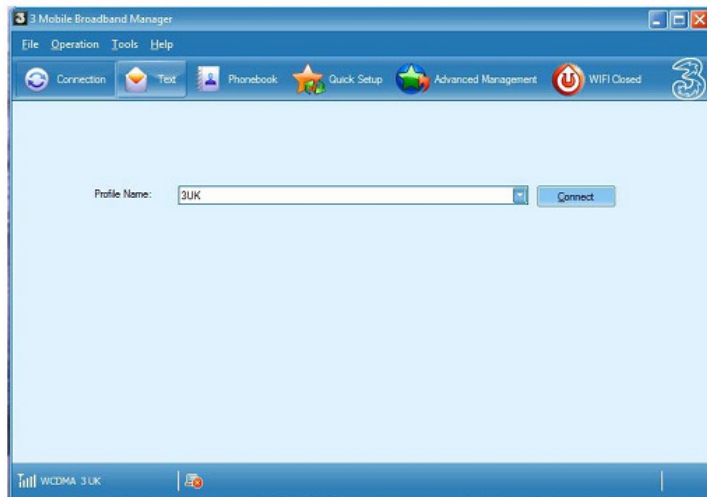


On clicking on 'Yes', the 'Quick Setup' tab opens. You can now change the name of your network (in the Name (SSID) field) and the Security Key of your network (in the WPA PSK (TKIP) field), or the APN for your network provider .

Choose a name of your preference. To make the security key secure, try using CAPITAL letters, numbers and symbols in your key. (For example: If you wanted your password to be JanetWiFi, you could set it as J@n3tW!F! – this would make it secure as well as easy to remember)



Then click on the 'Connection' tab. Click on 'Connect'. You should see a 'Connecting 3UK' popup prompt. On successful connection, the 'Connect' button now changes to 'Disconnect'.



The Wireless Modem is now connected to the internet, and sharing the connection over WiFi that other devices can use.